



**MATCH
ESTATES**

FIND YOUR
MATCH

Eastcliffe Heights, Radnor Bridge Road

Guide Price £170,000

1 1 1



GUIDE PRICE £170,000 - £180,000

Welcome to this stunning modern one-bedroom duplex, perfectly situated to offer breathtaking sea views. This beautifully designed home provides an ideal blend of contemporary living and convenience, making it an exceptional choice for both first-time buyers and those looking to downsize.

Upon entering, you are greeted by a spacious and light-filled living area, seamlessly connected to a modern, fully-fitted kitchen. The open-plan layout is perfect for entertaining or relaxing after a long day, with large windows ensuring an abundance of natural light.

The property boasts a generously sized bedroom on the upper floor. Adding to the versatility of this duplex is a separate workstation/office space, ideal for those who work from home or require a dedicated study area. This additional space ensures you can maintain a healthy work-life balance without compromising on living space.

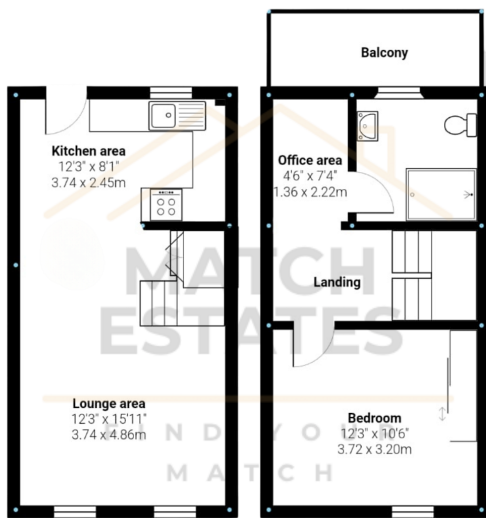
One of the standout features of this property is the private balcony, perfect for enjoying your morning coffee or evening sunset. The sea views from here are simply spectacular, offering a daily dose of natural beauty.

Residents also benefit from resident parking, providing convenience and peace of mind. The property is situated in a well-maintained development, offering a sense of community and security.

Located in a sought-after area, this duplex is within close proximity to local amenities, including shops, cafes, and public transport links. The seaside location offers numerous leisure opportunities, from beach walks to water sports, ensuring an active and enjoyable lifestyle.

Early viewings are highly recommended to fully appreciate all that this remarkable property has to offer. For more information or to arrange a viewing, please contact our estate agency.





Measurements are approximate and for display purposes only

- GUIDE PRICE £170,000 - £180,000
- Direct Sea Views
- Balcony
- Modern Duplex Apartment
- Separate Workstation / Home Office Space
- Open Plan Living
- Resident Parking
- Sought After Location



Energy Efficiency Rating		
	Current	Potential
<i>Very energy efficient - lower running costs</i>		
(92 plus) A		
(81-91) B		
(69-80) C	76	81
(55-68) D		
(39-54) E		
(21-38) F		
(1-20) G		
<i>Not energy efficient - higher running costs</i>		
England & Wales	EU Directive 2002/91/EC	

01303 475085

Match Estates LTD, trading as Match Estates, is a private limited company: 15509408
 Registered Address: B3 Bouverie House, Folkestone, Kent, CT20 1AE
 VAT Registration Number: 464 1921 89

www.match-estates.co.uk

